



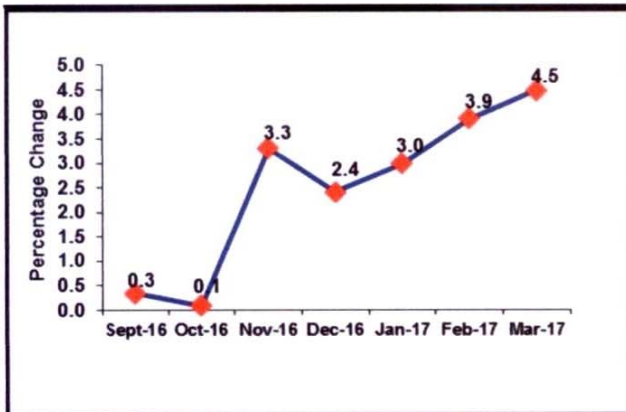
**Producer Price Index for Manufacturing**

**HIGHLIGHTS**

Annual Producer Price Increased by 4.5%

The Producer prices for manufactured goods increased by 4.5 % for the year ending March 2017 compared to the year ended March 2016. Similarly, for the year ending February 2017, the producer prices for manufactured goods registered an increase in prices by 3.9% compared to the year ended February 2016.

Figure 1: Trend in PPI-M September 2016 – March 2017



**Main Contributors to the 4.5% Annual increase**

Notable increases were in the following sectors:

- Processed Food by 5.8 % mainly due to a rise in prices of Sugar by 27.3%, Processed Coffee by 9.0%, Vegetable and Animal Oils by 7%, Processed Tea by 15.2% and Grain milling Products by 14.6%.
- Chemical Products by 7.2% mainly due to a rise in prices of Soap Products by 9.0% and Mattresses by 6.5%.
- Metal Products by 12.4% mainly due to a rise in prices of Structural Metal Products by 30.8% and Basic Iron and Steel products by 15%.

However, in the same period, prices for Textiles, Clothing and Footwear, Bricks and Cement, Miscellaneous Products groups registered annual declines of 0.7%, 0.8%, and 0.4% respectively.

**Monthly Changes**

The Producer prices for manufactured goods increased by 0.5% in March 2017 following a previous increase of 0.6% in February 2017. The increase in prices registered in March 2017 were mainly due to a rise in prices of Chemical Products by 1.3%, Metal Products by 2.1% and Textiles, Clothing and Footwear by 0.8%,

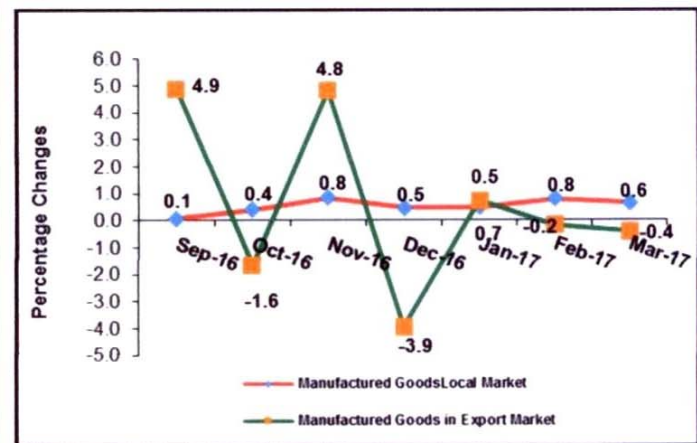
**Monthly Changes - Local**

Prices of Manufactured goods produced for consumption in the Local Market registered an increase of 0.6% in March 2017 following a previous increase of 0.8% in February 2017. The increase in prices registered in March 2017 was mainly due to a rise in prices of Processed Food by 0.3%, Chemical Products by 1.3% and Metal Products by 2.1%,

**Monthly Changes - Exports**

Prices of Manufactured Products for Export registered a decrease of 0.4% in March following a previous decrease of 0.2 % in February 2017. The price decrease registered in March 2017 was mainly due to a fall in prices of Processed Food by 0.6%. However, in the same period, prices for Drinks and Tobacco, Textiles, Clothing and Footwear products, Paper products, Chemical Products, Bricks and Cements, Metal Products registered monthly increases of 0.1%, 0.4%, 0.4%, 0.4%, 0.4% and 2.7% respectively.

Figure 2: Monthly Changes in PPI-M Local and Export



**Ben Paul Mungyereza**  
Executive Director

Tuesday 30<sup>th</sup> May, 2017

ISSUE (Monthly)

5<sup>th</sup> Issue February-March 2017

Expected Release Date

3<sup>rd</sup> Week of May 2017

Actual Release Date

30<sup>th</sup> May, 2017

**Table 1a: Producer Price Indices-Manufacturing (Combined), up to March 2017**

(Base period: July to Sept 2004=100)

ISIC Code	Industry Group	Weight	Sep-16	Oct-16	Nov-16	Dec-16	Jan-17	Feb-17	Mar-17
<b>D</b>	<b>All Manufactured Products</b>	<b>1000</b>	<b>283.4</b>	<b>283.6</b>	<b>287.9</b>	<b>287.1</b>	<b>288.6</b>	<b>290.4</b>	<b>291.8</b>
DA	FOOD PRODUCTS	419	357.0	356.9	366.4	360.9	362.4	365.6	365.6
DB	DRINKS AND TOBACCO	185	241.0	241.0	241.1	241.1	241.1	241.1	241.1
DC	TEXTILES, CLOTHING AND FOOTWEAR	42	371.8	372.3	373.4	374.1	374.3	374.1	377.1
DD	PAPER PRODUCTS	48	242.5	243	244.5	245.1	245.3	244.9	245.3
DE	CHEMICALS, PAINT, SOAP & FOAM PRODUCTS	106	238.1	238.1	243.3	242.5	242.6	243.2	246.3
DF	BRICKS & CEMENT	68	232.4	232.9	233	233.6	233.6	233.7	233.7
DG	METAL & RELATED PRODUCTS	91	211.5	212.4	214.5	220.3	228.1	231.6	236.4
DH	MISCELLANEOUS PRODUCTS	41	229.2	229.2	229.2	229.2	229.2	231.5	231.5
<b>DA</b>	<b>FOOD PRODUCTS</b>	<b>419</b>	<b>357.0</b>	<b>356.9</b>	<b>366.4</b>	<b>360.9</b>	<b>362.4</b>	<b>365.6</b>	<b>365.6</b>
DA11	Manufacture of Meat and Meat Products	4	416.4	416.4	416.4	416.4	401.6	401.6	401.6
DA12	Processing & Preserving of Fish & Fish Products	49	407.4	411.2	417.8	417.8	417.8	417.8	417.8
DA14	Manufacture of Vegetable and Animal Oils and Fats	80	287.0	281.3	279.1	294.4	294.4	307.9	307.9
DA20	Manufacture of Dairy Products	11	302.0	302.0	302.0	302	302.0	302.0	313.2
DA30	Coffee Processing	85	440.5	428.6	449.3	430.6	433.9	433.7	434.0
DA31	Manufacture of Grain Milling products	21	270.6	270.5	270.5	272.6	272.8	305.6	306.0
DA33	Manufacture of Prepared Animal Feeds	12	394.2	404.1	423.6	423.7	424.7	424.5	423.6
DA34	Tea Processing	47	509.1	513.1	515.7	518.6	518.5	515.6	513.6
DA41	Manufacture of Bakery products	22	250.3	250.3	250.3	250.3	252.0	252.0	252.0
DA42	Manufacture of Sugar	88	257.1	277.3	279.9	292.4	293.3	296.8	298.4
<b>DB</b>	<b>DRINKS AND TOBACCO</b>	<b>185</b>	<b>241.0</b>	<b>241</b>	<b>241.1</b>	<b>241.1</b>	<b>241.1</b>	<b>241.1</b>	<b>241.1</b>
DB53	Manufacture of Malt Liquors and Malt	77	240.1	240.1	240.1	240.1	240.1	240.1	240.1
DB54	Manufacture of Soft Drinks	57	168.0	168.0	168.0	168.0	168.0	168.0	168.0
DB90	Manufacture of Tobacco Products	51	350.7	352.8	361.2	363.7	364.1	363.7	364.2
<b>DC</b>	<b>TEXTILES, CLOTHING AND FOOTWEAR</b>	<b>42</b>	<b>371.8</b>	<b>372.3</b>	<b>373.4</b>	<b>374.1</b>	<b>374.3</b>	<b>374.1</b>	<b>377.1</b>
DC17	Cotton Ginning	16	****	****	****	****	****	****	****
DC18	Manufacture of Made-up Textiles & Wearing Apparel	17	278.8	279.2	280	280.5	280.7	280.5	282.8
DC19	Manufacture of Leather & Foot Wear	9	187.3	187.8	188.8	189.1	189.2	188.7	188.9
<b>DD</b>	<b>PAPER PRODUCTS</b>	<b>48</b>	<b>242.5</b>	<b>243</b>	<b>244.5</b>	<b>245.1</b>	<b>245.3</b>	<b>244.9</b>	<b>245.3</b>
DD20	Sawmilling, Paper & Paper Products	23	264.2	265.4	268.3	269.6	270.1	269.1	269.9
DD22	Printing & Publishing	25	209.7	209.7	209.7	209.7	209.7	209.7	209.7
<b>DE</b>	<b>CHEMICALS, PAINT, SOAP &amp; FOAM PRODUCTS</b>	<b>106</b>	<b>238.1</b>	<b>238.1</b>	<b>243.3</b>	<b>242.5</b>	<b>242.6</b>	<b>243.2</b>	<b>246.3</b>
DE22	Manufacture of Paint, Vanishes	8	203.1	203.1	203.1	204.6	204.6	204.6	204.6
DE23	Manufacture of Pharmaceuticals	12	284.9	285.1	286.6	287.1	287.1	287.1	287.1
DE29	Manufacture of Soap & Chemical Products	71	249.4	249.5	250.4	251.0	251.0	250.9	251.0
DE36	Mattresses	15	180.3	180.3	187.7	186.0	186.0	187.5	192.6
<b>DF</b>	<b>BRICKS &amp; CEMENT</b>	<b>68</b>	<b>232.4</b>	<b>232.9</b>	<b>233</b>	<b>233.6</b>	<b>233.6</b>	<b>233.7</b>	<b>233.7</b>
DF92	Manufacture of Bricks and Ceramic Products	7	266.6	264.4	264.4	264.4	264.4	264.4	264.4
DF95	Manufacture of Cement, Lime and Other Articles of Cement	61	230.5	235.2	235.5	237.3	237.4	237.6	237.7
<b>DG</b>	<b>METAL &amp; RELATED PRODUCTS</b>	<b>91</b>	<b>211.5</b>	<b>212.4</b>	<b>214.5</b>	<b>220.3</b>	<b>228.1</b>	<b>231.6</b>	<b>236.4</b>
DG27	Manufacture of Basic Iron and Steel	14	183.9	190.7	191.7	195.9	196.2	201.2	202.0
DG28	Manufacture of Structural Metal Products	71	200.0	200.8	203.6	211.2	226.8	234.2	243.9
DG35	Other Metal Products	6	215.8	216.5	218	222.7	222.8	222.6	222.9
<b>DH</b>	<b>MISCELLANEOUS PRODUCTS</b>	<b>41</b>	<b>229.2</b>	<b>229.2</b>	<b>229.2</b>	<b>229.2</b>	<b>229.2</b>	<b>231.5</b>	<b>231.5</b>
DH25	Manufacture of Plastic products	21	221.6	221.6	221.6	221.6	221.6	224.0	224.0
DH36	Manufacture of Furniture	20	267.9	268.2	268.6	268.5	268.5	268.9	269.6

**Table 1b: Annual Changes in Producer Price Indices-Manufacturing up to March 2017**

(Base period: July to Sept 2004=100)

Industry Group	Weight	Sep-16	Oct-16	Nov-16	Dec-16	Jan-17	Feb-17	Mar-17
<b>All Manufactured Products</b>	<b>1000</b>	<b>0.3</b>	<b>0.1</b>	<b>3.3</b>	<b>2.4</b>	<b>3.0</b>	<b>3.9</b>	<b>4.5</b>
FOOD PRODUCTS	419	4.7	3.8	7.4	4.6	5.4	5.8	5.8
DRINKS AND TOBACCO	185	-10.1	-6.6	-5.4	-5.3	-5.6	1.5	1.2
TEXTILES, CLOTHING AND FOOTWEAR	42	4.2	-0.7	-0.1	0.1	0.6	-1.6	-0.7
PAPER PRODUCTS	48	0.3	0.5	1.7	1.0	0.7	0.7	1.3
CHEMICALS, PAINT, SOAP & FOAM PRODUCTS	106	2.0	2.5	13.1	12.8	12.7	5.8	7.2
BRICKS & CEMENT	68	1.2	-1.4	-1.3	-1.0	-1.0	-0.8	-0.8
METAL & RELATED PRODUCTS	91	-3.8	-2.1	-0.7	1.9	5.3	9.7	12.4
MISCELLANEOUS PRODUCTS	41	-0.2	-0.8	-0.9	-3.1	-3.2	-0.5	-0.4
<b>FOOD PRODUCTS</b>	<b>419</b>	<b>4.7</b>	<b>3.8</b>	<b>7.4</b>	<b>4.6</b>	<b>5.4</b>	<b>5.8</b>	<b>5.8</b>
Manufacture of Meat and Meat Products	4	-0.1	-0.1	-0.1	-0.1	-3.2	-3.6	-3.6
Processing & Preserving of Fish & Fish Products	49	-2.8	-7.4	-5.9	-5.9	-7.9	-5.6	-8.9
Manufacture of Vegetable and Animal Oils and Fats	80	-4.3	-6.1	-6.7	-3.1	3.5	7.6	7.0
Manufacture of Dairy Products	11	-2.2	-14.3	-14.3	-14.3	-14.3	-13.1	-9.8
Coffee Processing	85	16.0	20.6	30.7	19.7	18.4	8.9	9.0
Manufacture of Grain Milling products	21	-9.3	-9.0	-6.9	-2.8	-1.1	12.8	14.6
Manufacture of Prepared Animal Feeds	12	-1.2	-6.8	-2.5	-0.9	-0.7	3.4	3.2
Tea Processing	47	12.6	10.6	12.0	13.5	12.8	15.6	15.2
Manufacture of Bakery products	22	0.0	-0.4	-3.2	-0.3	0.4	0.3	0.3
Manufacture of Sugar	88	11.9	19.6	20.6	25.5	25.9	20.4	27.3
<b>DRINKS AND TOBACCO</b>	<b>185</b>	<b>-10.1</b>	<b>-6.6</b>	<b>-5.4</b>	<b>-5.3</b>	<b>-5.6</b>	<b>1.5</b>	<b>1.2</b>
Manufacture of Malt Liquors and Malt	77	-3.3	-3.2	-3.2	-3.3	-3.3	0.0	0.0
Manufacture of Soft Drinks	57	0.1	0.1	0.1	0.1	0.1	0.1	0.1
Manufacture of Tobacco Products	51	-18.0	-4.9	3.3	5.0	3.2	11.3	10.7
<b>TEXTILES, CLOTHING AND FOOTWEAR</b>	<b>42</b>	<b>4.2</b>	<b>-0.7</b>	<b>-0.1</b>	<b>0.1</b>	<b>0.6</b>	<b>-1.6</b>	<b>-0.7</b>
Cotton Ginning	16	****	****	****	****	****	****	****
Manufacture of Made-up Textiles & Wearing Apparel	17	4.6	-3.4	-3.1	-2.9	-2.7	-4.6	-3.9
Manufacture of Leather & Foot Wear	9	-7.2	-7.0	-2.3	-0.4	4.5	-1.0	0.9
<b>PAPER PRODUCTS</b>	<b>48</b>	<b>0.3</b>	<b>0.5</b>	<b>1.7</b>	<b>1.0</b>	<b>0.7</b>	<b>0.7</b>	<b>1.3</b>
Sawmilling, Paper & Paper Products	23	-0.2	0.3	4.3	5.5	4.4	1.5	2.6
Printing & Publishing	25	1.0	0.9	0.9	-1.2	-1.2	0.0	0.0
<b>CHEMICALS, PAINT, SOAP &amp; FOAM PRODUCTS</b>	<b>106</b>	<b>2.0</b>	<b>2.5</b>	<b>13.1</b>	<b>12.8</b>	<b>12.7</b>	<b>5.8</b>	<b>7.2</b>
Manufacture of Paint, Vanishes	8	0.8	0.2	0.2	0.9	0.9	0.9	0.9
Manufacture of Pharmaceuticals	12	10.1	10.0	10.7	10.9	10.9	2.8	2.9
Manufacture of Soap & Chemical Products	71	8.4	8.6	10.1	10.1	9.8	8.8	9.0
Mattresses	15	-16.7	-17.5	19.6	18.6	18.7	3.7	6.5
<b>BRICKS &amp; CEMENT</b>	<b>68</b>	<b>1.2</b>	<b>-1.4</b>	<b>-1.3</b>	<b>-1.0</b>	<b>-1.0</b>	<b>-0.8</b>	<b>-0.8</b>
Manufacture of Bricks and Ceramic Products	7	3.3	-12.5	-12.3	-12.1	-12.1	-6.3	-6.3
Manufacture of Cement, Lime and Other Articles of Cement	61	1.0	4.0	4.2	5.0	5.0	3.9	4.0
<b>METAL &amp; RELATED PRODUCTS</b>	<b>91</b>	<b>-3.8</b>	<b>-2.1</b>	<b>-0.7</b>	<b>1.9</b>	<b>5.3</b>	<b>9.7</b>	<b>12.4</b>
Manufacture of Basic Iron and Steel	14	-15.8	-11.9	-7.6	-2.3	-9.7	13.8	15.0
Manufacture of Structural Metal Products	71	-5.5	-0.8	1.4	3.6	11.5	24.1	30.8
Other Metal Products	6	-3.7	-4.6	-3.8	-0.6	-0.5	-1.2	-1.0
<b>MISCELLANEOUS PRODUCTS</b>	<b>41</b>	<b>-0.2</b>	<b>-0.8</b>	<b>-0.9</b>	<b>-3.1</b>	<b>-3.2</b>	<b>-0.5</b>	<b>-0.4</b>
Manufacture of Plastic products	21	-0.5	-1.3	-1.4	-3.8	-3.8	-0.9	-0.8
Manufacture of Furniture	20	0.9	0.6	0.7	0.5	0.5	-0.3	0.0

**Table 1c: Monthly Changes in Producer Price Indices-Manufacturing (Combined), up to March 2017**

(Base period: July to Sept 2004=100)

Industry Group	Weight	Sep-16	Oct-16	Nov-16	Dec-16	Jan-17	Feb-17	Mar-17
<b>All Manufactured Products</b>	<b>1000</b>	<b>0.4</b>	<b>0.1</b>	<b>1.5</b>	<b>-0.3</b>	<b>0.5</b>	<b>0.6</b>	<b>0.5</b>
FOOD PRODUCTS	419	1.2	0.0	2.7	-1.5	0.4	0.9	0.0
DRINKS AND TOBACCO	185	1.1	0.0	0.0	0.0	0.0	0.0	0.0
TEXTILES, CLOTHING AND FOOTWEAR	42	-2.6	0.1	0.3	0.2	0.0	-0.1	0.8
PAPER PRODUCTS	48	-1.0	0.2	0.6	0.3	0.1	-0.2	0.1
CHEMICALS, PAINT, SOAP & FOAM PRODUCTS	106	1.3	0.0	2.2	-0.3	0.0	0.3	1.3
BRICKS & CEMENT	68	0.8	0.2	0.0	0.2	0.0	0.0	0.0
METAL & RELATED PRODUCTS	91	-0.8	0.4	1.0	2.7	3.5	1.5	2.1
MISCELLANEOUS PRODUCTS	41	-0.6	0.0	0.0	0.0	0.0	1.0	0.0
<b>FOOD PRODUCTS</b>	<b>419</b>	<b>1.2</b>	<b>0.0</b>	<b>2.7</b>	<b>-1.5</b>	<b>0.4</b>	<b>0.9</b>	<b>0.0</b>
Manufacture of Meat and Meat Products	4	0.0	0.0	0.0	0.0	-3.6	0.0	0.0
Processing & Preserving of Fish & Fish Products	49	-7.4	0.9	1.6	0.0	0.0	0.0	0.0
Manufacture of Vegetable and Animal Oils and Fats	80	0.0	-2.0	-0.8	5.5	0.0	4.6	0.0
Manufacture of Dairy Products	11	-12.3	0.0	0.0	0.0	0.0	0.0	3.7
Coffee Processing	85	4.4	-2.7	4.8	-4.2	0.8	-0.1	0.1
Manufacture of Grain Milling products	21	3.8	0.0	0.0	0.8	0.1	12.0	0.1
Manufacture of Prepared Animal Feeds	12	2.1	2.5	4.8	0.0	0.2	0.0	-0.2
Tea Processing	47	-0.3	0.8	0.5	0.6	0.0	-0.6	-0.4
Manufacture of Bakery products	22	-0.4	0.0	0.0	0.0	0.7	0.0	0.0
Manufacture of Sugar	88	3.6	7.9	0.9	4.4	0.3	1.2	0.5
<b>DRINKS AND TOBACCO</b>	<b>185</b>	<b>1.1</b>	<b>0.0</b>	<b>0.0</b>	<b>0.0</b>	<b>0.0</b>	<b>0.0</b>	<b>0.0</b>
Manufacture of Malt Liquors and Malt	77	0.0	0.0	0.0	0.0	0.0	0.0	0.0
Manufacture of Soft Drinks	57	-0.3	0.0	0.0	0.0	0.0	0.0	0.0
Manufacture of Tobacco Products	51	4.7	0.6	2.4	0.7	0.1	-0.1	0.1
<b>TEXTILES, CLOTHING AND FOOTWEAR</b>	<b>42</b>	<b>-2.6</b>	<b>0.1</b>	<b>0.3</b>	<b>0.2</b>	<b>0.0</b>	<b>-0.1</b>	<b>0.8</b>
Cotton Ginning	16	****	****	****	****	****	****	****
Manufacture of Made-up Textiles & Wearing Apparel	17	-5.6	0.1	0.3	0.2	0.0	-0.1	0.8
Manufacture of Leather & Foot Wear	9	-0.7	0.3	0.5	0.2	0.1	-0.3	0.1
<b>PAPER PRODUCTS</b>	<b>48</b>	<b>-1.0</b>	<b>0.2</b>	<b>0.6</b>	<b>0.3</b>	<b>0.1</b>	<b>-0.2</b>	<b>0.1</b>
Sawmilling, Paper & Paper Products	23	0.1	0.5	1.1	0.5	0.2	-0.4	0.3
Printing & Publishing	25	-1.6	0.0	0.0	0.0	0.0	0.0	0.0
<b>CHEMICALS, PAINT, SOAP &amp; FOAM PRODUCTS</b>	<b>106</b>	<b>1.3</b>	<b>0.0</b>	<b>2.2</b>	<b>-0.3</b>	<b>0.0</b>	<b>0.3</b>	<b>1.3</b>
Manufacture of Paint, Vanishes	8	0.4	0.0	0.0	0.7	0.0	0.0	0.0
Manufacture of Pharmaceuticals	12	1.9	0.1	0.5	0.2	0.0	0.0	0.0
Manufacture of Soap & Chemical Products	71	0.0	0.1	0.3	0.2	0.0	-0.1	0.0
Mattresses	15	-0.1	0.0	4.1	-0.9	0.0	0.8	2.7
<b>BRICKS &amp; CEMENT</b>	<b>68</b>	<b>0.8</b>	<b>0.2</b>	<b>0.0</b>	<b>0.2</b>	<b>0.0</b>	<b>0.0</b>	<b>0.0</b>
Manufacture of Bricks and Ceramic Products	7	0.5	-0.8	0.0	0.0	0.0	0.0	0.0
Manufacture of Cement, Lime and Other Articles of Cement	61	1.0	2.0	0.1	0.8	0.0	0.1	0.0
<b>METAL &amp; RELATED PRODUCTS</b>	<b>91</b>	<b>-0.8</b>	<b>0.4</b>	<b>1.0</b>	<b>2.7</b>	<b>3.5</b>	<b>1.5</b>	<b>2.1</b>
Manufacture of Basic Iron and Steel	14	-0.5	3.7	0.5	2.2	0.2	2.6	0.4
Manufacture of Structural Metal Products	71	-0.4	0.4	1.4	3.7	7.4	3.2	4.1
Other Metal Products	6	-1.2	0.3	0.7	2.1	0.1	-0.1	0.1
<b>MISCELLANEOUS PRODUCTS</b>	<b>41</b>	<b>-0.6</b>	<b>0.0</b>	<b>0.0</b>	<b>0.0</b>	<b>0.0</b>	<b>1.0</b>	<b>0.0</b>
Manufacture of Plastic products	21	-0.7	0.0	0.0	0.0	0.0	1.1	0.0
Manufacture of Furniture	20	-0.4	0.1	0.1	0.0	0.0	0.2	0.2

**Table 2a: Producer Prices-Manufacturing- (Local Market) up to March 2017**

(Base period: July to Sept 2004=100)

Industry Group	Weight	Sep-16	Oct-16	Nov-16	Dec-16	Jan-17	Feb-17	Mar-17
<b>All Manufactured Products</b>	<b>791</b>	<b>256.8</b>	<b>257.9</b>	<b>260.0</b>	<b>261.2</b>	<b>262.5</b>	<b>264.5</b>	<b>266.2</b>
FOOD PRODUCTS	<b>269</b>	321.7	325.0	328.2	330.0	330.7	<b>335.3</b>	<b>336.3</b>
DRINKS AND TOBACCO	<b>168</b>	203.7	203.7	203.7	203.7	203.7	<b>203.7</b>	<b>203.7</b>
TEXTILES, CLOTHING AND FOOTWEAR	<b>29</b>	344.9	345.3	346.3	346.9	347.1	346.9	349.7
PAPER PRODUCTS	<b>47</b>	242.6	242.4	242.6	243.0	243.1	243.0	243.2
CHEMICALS, PAINT, SOAP & FOAM PRODUCTS	<b>100</b>	234.7	234.7	239.7	239.0	239.0	239.7	242.7
BRICKS & CEMENT	<b>59</b>	224.6	225.0	225.0	225.5	225.5	225.7	225.7
METAL & RELATED PRODUCTS	<b>80</b>	212.5	213.3	215.3	221.5	229.6	233.1	237.9
MISCELLANEOUS PRODUCTS	<b>39</b>	231.1	231.1	231.1	231.1	231.1	233.5	233.5
<b>FOOD PRODUCTS</b>	<b>269</b>	<b>321.7</b>	<b>325.0</b>	<b>328.2</b>	<b>330.0</b>	<b>330.7</b>	<b>335.3</b>	<b>336.3</b>
Manufacture of Meat and Meat Products	<b>4</b>	416.4	416.4	416.4	416.4	401.6	401.6	401.6
Manufacture of Vegetable and Animal Oils and Fats	<b>80</b>	287.0	281.3	279.1	294.5	294.4	307.9	307.9
Manufacture of Dairy Products	<b>11</b>	302.0	302.0	302.0	302.0	302.0	302.0	313.2
Coffee Processing	<b>31</b>	645.3	645.0	647.3	655.4	655.6	655.6	675.8
Manufacture of Grain Milling products	<b>19</b>	258.8	258.8	258.7	260.8	260.9	292.3	292.7
Manufacture of Prepared Animal Feeds	<b>12</b>	394.2	404.1	423.6	423.6	424.7	424.5	423.6
Tea Processing	<b>2</b>	240.0	240.0	240.0	240.2	240.2	240.2	240.2
Manufacture of Bakery products	<b>22</b>	250.3	250.3	250.3	250.3	252.0	252.0	252.0
Manufacture of Sugar	<b>88</b>	257.1	277.3	279.9	292.4	293.3	296.8	298.4
<b>DRINKS AND TOBACCO</b>	<b>168</b>	<b>203.7</b>	<b>203.7</b>	<b>203.7</b>	<b>203.7</b>	<b>203.7</b>	<b>203.7</b>	<b>203.7</b>
Manufacture of Malt Liquors and Malt	<b>60</b>	244.9	244.9	244.9	244.9	244.9	244.9	244.9
Manufacture of Soft Drinks	<b>57</b>	168.0	168.0	168.0	168.0	168.0	168.0	168.0
Manufacture of Tobacco Products	<b>51</b>	****	****	****	****	****	****	****
<b>TEXTILES, CLOTHING AND FOOTWEAR</b>	<b>29</b>	<b>344.9</b>	<b>345.3</b>	<b>346.3</b>	<b>346.9</b>	<b>347.1</b>	<b>346.9</b>	<b>349.7</b>
Cotton Ginning	<b>6</b>	****	****	****	****	****	****	****
Manufacture of Made-up Textiles & Wearing Apparel	<b>17</b>	278.8	279.2	280.0	280.5	280.7	280.5	282.8
Manufacture of Leather & Foot Wear	<b>6</b>	297.2	297.2	297.2	297.2	297.2	297.2	297.2
<b>PAPER PRODUCTS</b>	<b>47</b>	<b>242.6</b>	<b>242.4</b>	<b>242.6</b>	<b>243.0</b>	<b>243.1</b>	<b>243.0</b>	<b>243.2</b>
Sawmilling, Paper & Paper Products	<b>22</b>	264.5	264.0	264.6	265.3	265.6	265.3	266.0
Printing & Publishing	<b>25</b>	209.7	209.7	209.7	209.7	209.7	209.7	209.7
<b>CHEMICALS, PAINT, SOAP &amp; FOAM PRODUCTS</b>	<b>100</b>	<b>234.7</b>	<b>234.7</b>	<b>239.7</b>	<b>239.0</b>	<b>239.0</b>	<b>239.7</b>	<b>242.7</b>
Manufacture of Paint, Vanishes	<b>8</b>	203.1	203.1	203.1	204.6	204.6	204.6	204.6
Manufacture of Pharmaceuticals	<b>12</b>	284.9	285.1	286.6	287.1	287.1	287.1	287.1
Manufacture of Soap & Chemical Products	<b>65</b>	245.8	245.9	246.2	246.7	246.7	246.7	246.8
Mattresses	<b>15</b>	180.3	180.3	187.7	186.0	186.0	187.5	192.6
<b>BRICKS &amp; CEMENT</b>	<b>59</b>	<b>224.6</b>	<b>225.0</b>	<b>225.0</b>	<b>225.5</b>	<b>225.5</b>	<b>225.7</b>	<b>225.7</b>
Manufacture of Bricks and Ceramic Products	<b>7</b>	266.6	264.4	264.4	264.4	264.4	264.4	264.4
Manufacture of Cement, Lime and Other Articles of Cement	<b>52</b>	222.0	226.6	226.6	228.4	228.4	228.6	228.6
<b>METAL &amp; RELATED PRODUCTS</b>	<b>80</b>	<b>212.5</b>	<b>213.3</b>	<b>215.3</b>	<b>221.5</b>	<b>229.6</b>	<b>233.1</b>	<b>237.9</b>
Manufacture of Basic Iron and Steel	<b>14</b>	183.9	190.7	191.7	196.0	196.2	201.2	202.0
Manufacture of Structural Metal Products	<b>60</b>	199.9	200.5	203.4	211.8	229.0	236.8	246.9
Other Metal Products	<b>6</b>	215.8	216.5	218.0	222.7	222.8	222.6	222.9
<b>MISCELLANEOUS PRODUCTS</b>	<b>39</b>	<b>231.1</b>	<b>231.1</b>	<b>231.1</b>	<b>231.1</b>	<b>231.1</b>	<b>233.5</b>	<b>233.5</b>
Manufacture of Plastic products	<b>19</b>	225.3	225.3	225.3	225.3	225.3	227.8	227.8
Manufacture of Furniture	<b>20</b>	267.9	268.2	268.6	268.5	268.5	268.9	269.6

**Table 2b: Annual Changes in Producer Price Indices-Manufacturing (Local) up to March 2017**

(Base period: July to Sept 2004=100)

Industry Group	Weight	Sep-16	Oct-16	Nov-16	Dec-16	Jan-17	Feb-17	Mar-17
<b>All Manufactured Products</b>	<b>791</b>	<b>-0.1</b>	<b>-0.4</b>	<b>1.7</b>	<b>2.2</b>	<b>3.0</b>	<b>3.3</b>	<b>4.2</b>
FOOD PRODUCTS	269	-0.2	-0.7	0.0	1.1	2.7	4.2	4.9
DRINKS AND TOBACCO	168	-1.5	-1.5	-1.5	-1.5	-1.5	0.1	0.1
TEXTILES, CLOTHING AND FOOTWEAR	29	-0.7	-2.7	-2.4	-2.2	-2.0	-4.1	-3.3
PAPER PRODUCTS	47	0.4	0.4	0.7	-0.4	-0.5	-0.1	0.3
CHEMICALS, PAINT, SOAP & FOAM PRODUCTS	100	2.7	2.5	13.2	12.8	12.8	5.6	7.0
BRICKS & CEMENT	59	-1.7	-1.9	-1.9	-1.6	-1.6	-1.4	-1.4
METAL & RELATED PRODUCTS	80	-1.4	-1.3	-0.1	2.5	6.1	10.4	12.8
MISCELLANEOUS PRODUCTS	39	-0.7	-0.7	-0.9	-1.5	-1.6	-0.3	-0.2
<b>FOOD PRODUCTS</b>	<b>269</b>	<b>-0.2</b>	<b>-0.7</b>	<b>0.0</b>	<b>1.1</b>	<b>2.7</b>	<b>4.2</b>	<b>4.9</b>
Manufacture of Meat and Meat Products	4	-0.1	-0.1	-0.1	-0.1	-3.2	-3.6	-3.6
Manufacture of Vegetable and Animal Oils and Fats	80	-4.2	-6.1	-6.7	-3.1	3.5	7.6	7.0
Manufacture of Dairy Products	11	-14.3	-14.3	-14.3	-14.3	-14.3	-13.1	-9.8
Coffee Processing	31	3.4	1.1	1.5	2.8	2.8	2.1	5.0
Manufacture of Grain Milling products	19	-8.9	-9.0	-6.9	-2.8	-1.1	12.8	14.6
Manufacture of Prepared Animal Feeds	12	-1.1	-6.8	-2.5	-0.9	-0.7	3.4	3.2
Tea Processing	2	27.6	26.9	15.7	17.8	17.7	15.9	16.9
Manufacture of Bakery products	22	-0.4	-0.4	-3.2	-0.3	0.4	0.3	0.3
Manufacture of Sugar	88	11.9	19.6	20.6	25.5	25.9	20.4	27.3
<b>DRINKS AND TOBACCO</b>	<b>167</b>	<b>-1.5</b>	<b>-1.5</b>	<b>-1.5</b>	<b>-1.5</b>	<b>-1.5</b>	<b>0.1</b>	<b>0.1</b>
Manufacture of Malt Liquors and Malt	60	-3.2	-3.2	-3.2	-3.3	-3.3	0.0	0.0
Manufacture of Soft Drinks	57	0.1	0.1	0.1	0.1	0.1	0.1	0.1
Manufacture of Tobacco Products	51	***	***	***	***	***	***	***
<b>TEXTILES, CLOTHING AND FOOTWEAR</b>	<b>29</b>	<b>-0.7</b>	<b>-2.7</b>	<b>-2.4</b>	<b>-2.2</b>	<b>-2.0</b>	<b>-4.1</b>	<b>-3.3</b>
Cotton Ginning	6	****	****	****	****	****	****	****
Manufacture of Made-up Textiles & Wearing Apparel	17	-1.4	-3.4	-3.1	-2.9	-2.7	-4.6	-3.9
Manufacture of Leather & Foot Wear	6	7.9	7.9	3.0	3.0	3.0	-0.4	-0.4
<b>PAPER PRODUCTS</b>	<b>47</b>	<b>0.4</b>	<b>0.4</b>	<b>0.7</b>	<b>-0.4</b>	<b>-0.5</b>	<b>-0.1</b>	<b>0.3</b>
Sawmilling, Paper & Paper Products	22	0.0	-0.2	1.6	2.2	1.6	-0.2	0.8
Printing & Publishing	25	0.9	0.9	0.9	-1.2	-1.2	0.0	0.0
<b>CHEMICALS, PAINT, SOAP &amp; FOAM PRODUCTS</b>	<b>100</b>	<b>2.7</b>	<b>2.5</b>	<b>13.2</b>	<b>12.8</b>	<b>12.8</b>	<b>5.6</b>	<b>7.0</b>
Manufacture of Paint, Vanishes	8	1.2	0.2	0.2	0.9	0.9	0.9	0.9
Manufacture of Pharmaceuticals	12	10.2	10.0	10.7	10.9	10.9	2.8	2.9
Manufacture of Soap & Chemical Products	65	9.1	9.1	9.8	9.6	9.6	8.9	8.9
Mattresses	15	-17.5	-17.5	19.6	18.6	18.7	3.7	6.5
<b>BRICKS &amp; CEMENT</b>	<b>59</b>	<b>-1.7</b>	<b>-1.9</b>	<b>-1.9</b>	<b>-1.6</b>	<b>-1.6</b>	<b>-1.4</b>	<b>-1.4</b>
Manufacture of Bricks and Ceramic Products	7	-10.3	-12.5	-12.3	-12.1	-12.1	-6.3	-6.3
Manufacture of Cement, Lime and Other Articles of Cement	52	2.0	4.0	4.0	4.9	4.9	3.8	3.8
<b>METAL &amp; RELATED PRODUCTS</b>	<b>80</b>	<b>-1.4</b>	<b>-1.3</b>	<b>-0.1</b>	<b>2.5</b>	<b>6.1</b>	<b>10.4</b>	<b>12.8</b>
Manufacture of Basic Iron and Steel	14	-15.8	-11.9	-7.6	-2.3	-9.7	13.8	15.0
Manufacture of Structural Metal Products	60	3.1	2.7	4.4	6.5	15.6	28.9	35.0
Other Metal Products	6	-4.8	-4.6	-3.8	-0.6	-0.5	-1.2	-1.0
<b>MISCELLANEOUS PRODUCTS</b>	<b>39</b>	<b>-0.7</b>	<b>-0.7</b>	<b>-0.9</b>	<b>-1.5</b>	<b>-1.6</b>	<b>-0.3</b>	<b>-0.2</b>
Manufacture of Plastic products	19	-1.2	-1.2	-1.4	-2.1	-2.2	-0.6	-0.6
Manufacture of Furniture	20	0.5	0.6	0.7	0.5	0.5	-0.3	0.0

**Table 2c: Monthly Changes in Producer Price Indices-Manufacturing (Local), up to March 2017**

(Base period: July to Sept 2004=100)

Industry Group	Weight	Sep-16	Oct-16	Nov-16	Dec-16	Jan-17	Feb-17	Mar-17
<b>All Manufactured Products</b>	<b>791</b>	<b>0.1</b>	<b>0.4</b>	<b>0.8</b>	<b>0.5</b>	<b>0.5</b>	<b>0.8</b>	<b>0.6</b>
FOOD PRODUCTS	<b>269</b>	0.5	1.0	1.0	0.5	0.2	1.4	0.3
DRINKS AND TOBACCO	<b>168</b>	-0.2	0.0	0.0	0.0	0.0	0.0	0.0
TEXTILES, CLOTHING AND FOOTWEAR	<b>29</b>	-5.0	0.1	0.3	0.2	0.0	-0.1	0.8
PAPER PRODUCTS	<b>47</b>	-1.1	-0.1	0.1	0.1	0.0	0.0	0.1
CHEMICALS, PAINT, SOAP & FOAM PRODUCTS	<b>100</b>	1.2	0.0	2.1	-0.3	0.0	0.3	1.3
BRICKS & CEMENT	<b>59</b>	0.8	0.2	0.0	0.2	0.0	0.1	0.0
METAL & RELATED PRODUCTS	<b>80</b>	-0.7	0.4	0.9	2.9	3.7	1.5	2.1
MISCELLANEOUS PRODUCTS	<b>39</b>	-0.4	0.0	0.0	0.0	0.0	1.0	0.0
<b>FOOD PRODUCTS</b>	<b>269</b>	<b>0.5</b>	<b>1.0</b>	<b>1.0</b>	<b>0.5</b>	<b>0.2</b>	<b>1.4</b>	<b>0.3</b>
Manufacture of Meat and Meat Products	<b>4</b>	0.0	0.0	0.0	0.0	-3.6	0.0	0.0
Manufacture of Vegetable and Animal Oils and Fats	<b>80</b>	0.0	-2.0	-0.8	5.5	0.0	4.6	0.0
Manufacture of Dairy Products	<b>11</b>	-12.3	0.0	0.0	0.0	0.0	0.0	3.7
Coffee Processing	<b>31</b>	-0.9	0.0	0.4	1.3	0.0	0.0	3.1
Manufacture of Grain Milling products	<b>19</b>	3.8	0.0	0.0	0.8	0.1	12.0	0.1
Manufacture of Prepared Animal Feeds	<b>12</b>	2.1	2.5	4.8	0.0	0.3	0.0	-0.2
Tea Processing	<b>2</b>	0.5	0.0	0.0	0.1	0.0	0.0	0.0
Manufacture of Bakery products	<b>22</b>	-0.4	0.0	0.0	0.0	0.7	0.0	0.0
Manufacture of Sugar	<b>88</b>	3.6	7.9	0.9	4.4	0.3	1.2	0.5
<b>DRINKS AND TOBACCO</b>	<b>168</b>	<b>-0.2</b>	<b>0.0</b>	<b>0.0</b>	<b>0.0</b>	<b>0.0</b>	<b>0.0</b>	<b>0.0</b>
Manufacture of Malt Liquors and Malt	<b>60</b>	0.0	0.0	0.0	0.0	0.0	0.0	0.0
Manufacture of Soft Drinks	<b>57</b>	-0.3	0.0	0.0	0.0	0.0	0.0	0.0
Manufacture of Tobacco Products	<b>51</b>	****	****	****	****	****	****	****
<b>TEXTILES, CLOTHING AND FOOTWEAR</b>	<b>29</b>	<b>-5.0</b>	<b>0.1</b>	<b>0.3</b>	<b>0.2</b>	<b>0.0</b>	<b>-0.1</b>	<b>0.8</b>
Cotton Ginning	<b>6</b>	****	****	****	****	****	****	****
Manufacture of Made-up Textiles & Wearing Apparel	<b>17</b>	-5.6	0.1	0.3	0.2	0.0	-0.1	0.8
Manufacture of Leather & Foot Wear	<b>6</b>	0.0	0.0	0.0	0.0	0.0	0.0	0.0
<b>PAPER PRODUCTS</b>	<b>47</b>	<b>-1.1</b>	<b>-0.1</b>	<b>0.1</b>	<b>0.1</b>	<b>0.0</b>	<b>0.0</b>	<b>0.1</b>
Sawmilling, Paper & Paper Products	<b>22</b>	0.0	-0.2	0.2	0.3	0.1	-0.1	0.3
Printing & Publishing	<b>25</b>	-1.6	0.0	0.0	0.0	0.0	0.0	0.0
<b>CHEMICALS, PAINT, SOAP &amp; FOAM PRODUCTS</b>	<b>100</b>	<b>1.2</b>	<b>0.0</b>	<b>2.1</b>	<b>-0.3</b>	<b>0.0</b>	<b>0.3</b>	<b>1.3</b>
Manufacture of Paint, Vanishes	<b>8</b>	0.4	0.0	0.0	0.7	0.0	0.0	0.0
Manufacture of Pharmaceuticals	<b>12</b>	1.9	0.1	0.5	0.2	0.0	0.0	0.0
Manufacture of Soap & Chemical Products	<b>65</b>	0.0	0.0	0.1	0.2	0.0	0.0	0.0
Mattresses	<b>15</b>	-0.1	0.0	4.1	-0.9	0.0	0.8	2.7
<b>BRICKS &amp; CEMENT</b>	<b>59</b>	<b>0.8</b>	<b>0.2</b>	<b>0.0</b>	<b>0.2</b>	<b>0.0</b>	<b>0.1</b>	<b>0.0</b>
Manufacture of Bricks and Ceramic Products	<b>7</b>	0.5	-0.8	0.0	0.0	0.0	0.0	0.0
Manufacture of Cement, Lime and Other Articles of Cement	<b>52</b>	1.0	2.0	0.0	0.8	0.0	0.1	0.0
<b>METAL &amp; RELATED PRODUCTS</b>	<b>80</b>	<b>-0.7</b>	<b>0.4</b>	<b>0.9</b>	<b>2.9</b>	<b>3.7</b>	<b>1.5</b>	<b>2.1</b>
Manufacture of Basic Iron and Steel	<b>14</b>	-0.5	3.7	0.5	2.3	0.1	2.6	0.4
Manufacture of Structural Metal Products	<b>60</b>	-0.4	0.3	1.4	4.1	8.2	3.4	4.3
Other Metal Products	<b>6</b>	-1.2	0.3	0.7	2.1	0.1	-0.1	0.1
<b>MISCELLANEOUS PRODUCTS</b>	<b>39</b>	<b>-0.4</b>	<b>0.0</b>	<b>0.0</b>	<b>0.0</b>	<b>0.0</b>	<b>1.0</b>	<b>0.0</b>
Manufacture of Plastic products	<b>19</b>	-0.4	0.0	0.0	0.0	0.0	1.1	0.0
Manufacture of Furniture	<b>20</b>	-0.4	0.1	0.1	0.0	0.0	0.2	0.2

**Table 3a: Producer Prices-Manufacturing- (Export Market) up to March 2017**

(Base period: July to Sept 2004=100)

Industry Group	Weight	Sep-16	Oct-16	Nov-16	Dec-16	Jan-17	Feb-17	Mar-17
<b>All Manufactured Products</b>	<b>260</b>	<b>386.2</b>	<b>379.8</b>	<b>398.1</b>	<b>382.4</b>	<b>385.1</b>	<b>384.5</b>	<b>382.9</b>
FOOD PRODUCTS	150	429.4	420.6	441.9	421.6	424.9	424.3	421.8
DRINKS AND TOBACCO	17	321.2	323.1	330.8	333.1	333.5	333.1	333.6
TEXTILES, CLOTHING AND FOOTWEAR	13	327.4	332.7	344.8	348.4	349.5	347.2	348.5
PAPER PRODUCTS	1	217.5	221.0	229.0	231.4	232.2	230.6	231.5
CHEMICALS, PAINT, SOAP & FOAM PRODUCTS	6	260.2	264.3	273.9	276.8	277.7	275.8	276.9
BRICKS & CEMENT	9	294.6	299.3	310.2	313.5	314.4	312.3	313.5
METAL & RELATED PRODUCTS	11	204.0	207.3	210.3	211.9	212.7	214.3	220.1
MISCELLANEOUS PRODUCTS	2	174.8	174.8	174.8	174.8	174.8	174.8	174.8
<b>FOOD PRODUCTS</b>	<b>150</b>	<b>429.4</b>	<b>420.6</b>	<b>441.9</b>	<b>421.6</b>	<b>424.9</b>	<b>424.3</b>	<b>421.8</b>
Processing & Preserving of Fish & Fish Products	49	407.4	411.2	417.8	417.8	417.8	417.8	417.8
Coffee Processing	54	226.5	219.1	231.6	219.6	221.6	221.5	220.4
Manufacture of Grain Milling products	2	****	****	****	****	****	****	****
Tea Processing	45	478.4	501.8	512.6	524.0	523.8	514.7	502.9
<b>DRINKS AND TOBACCO</b>	<b>17</b>	<b>321.2</b>	<b>323.1</b>	<b>330.8</b>	<b>333.1</b>	<b>333.5</b>	<b>333.1</b>	<b>333.6</b>
Manufacture of Malt Liquors and Malt	17	****	****	****	****	****	****	****
Manufacture of Tobacco Products	51	350.7	352.8	361.2	363.7	364.1	363.7	364.2
<b>TEXTILES, CLOTHING AND FOOTWEAR</b>	<b>13</b>	<b>327.4</b>	<b>332.7</b>	<b>344.8</b>	<b>348.4</b>	<b>349.5</b>	<b>347.2</b>	<b>348.5</b>
Cotton Ginning	10	****	****	****	****	****	****	****
Manufacture of Leather & Foot Wear	3	108.8	110.6	114.6	115.8	116.2	115.4	115.8
<b>PAPER PRODUCTS</b>	<b>1</b>	<b>217.5</b>	<b>221.0</b>	<b>229.0</b>	<b>231.4</b>	<b>232.2</b>	<b>230.6</b>	<b>231.5</b>
Sawmilling, Paper & Paper Products	1	217.5	221.0	229.0	231.4	232.2	230.6	231.5
<b>CHEMICALS, PAINT, SOAP &amp; FOAM PRODUCTS</b>	<b>6</b>	<b>260.2</b>	<b>264.3</b>	<b>273.9</b>	<b>276.8</b>	<b>277.7</b>	<b>275.8</b>	<b>276.9</b>
Manufacture of Soap & Chemical Products	6	260.2	264.3	273.9	276.8	277.7	275.8	276.9
<b>BRICKS &amp; CEMENT</b>	<b>9</b>	<b>294.6</b>	<b>299.3</b>	<b>310.2</b>	<b>313.5</b>	<b>314.4</b>	<b>312.3</b>	<b>313.5</b>
Manufacture of Cement, Lime and Other Articles of Cement	9	294.6	299.3	310.2	313.5	314.4	312.3	313.5
<b>METAL &amp; RELATED PRODUCTS</b>	<b>11</b>	<b>204.0</b>	<b>207.3</b>	<b>210.3</b>	<b>211.9</b>	<b>212.7</b>	<b>214.3</b>	<b>220.1</b>
Manufacture of Structural Metal Products	11	204.0	207.3	210.3	211.9	212.7	214.3	220.1
<b>MISCELLANEOUS PRODUCTS</b>	<b>2</b>	<b>174.8</b>	<b>174.8</b>	<b>174.8</b>	<b>174.8</b>	<b>174.8</b>	<b>174.8</b>	<b>174.8</b>
Manufacture of Plastic products	2	174.8	174.8	174.8	174.8	174.8	174.8	174.8



**Table 3b: Annual Changes Producer Prices-Manufacturing (Export Market) up to March 2017**

(Base period: July to Sept 2004=100)

Industry Group	Weight	Sep-16	Oct-16	Nov-16	Dec-16	Jan-17	Feb-17	Mar-17
<b>All Manufactured Products</b>	<b>260</b>	<b>0.0</b>	<b>7.6</b>	<b>17.2</b>	<b>8.6</b>	<b>7.7</b>	<b>8.8</b>	<b>7.9</b>
FOOD PRODUCTS	<b>150</b>	9.8	21.5	33.0	20.5	18.8	20.1	14.9
DRINKS AND TOBACCO	<b>68</b>	-14.4	-4.9	3.3	5.0	3.2	4.8	4.1
TEXTILES, CLOTHING AND FOOTWEAR	<b>13</b>	-17.6	-15.6	-8.4	-5.6	-0.7	20.9	23.9
PAPER PRODUCTS	<b>1</b>	-7.8	-5.5	3.8	7.0	4.6	4.4	6.9
CHEMICALS, PAINT, SOAP & FOAM PRODUCTS	<b>6</b>	-14.0	-11.9	-3.1	-0.5	-3.3	-3.5	-0.5
BRICKS & CEMENT	<b>9</b>	-7.8	-5.5	3.8	7.0	4.6	4.4	6.9
METAL & RELATED PRODUCTS	<b>11</b>	-6.2	-6.1	-2.1	0.0	0.0	1.2	5.0
MISCELLANEOUS PRODUCTS	<b>2</b>	-3.8	-3.8	-3.8	-9.9	-9.9	-9.9	-9.8
<b>FOOD PRODUCTS</b>	<b>150</b>	<b>9.8</b>	<b>21.5</b>	<b>33.0</b>	<b>20.5</b>	<b>18.8</b>	<b>20.1</b>	<b>14.9</b>
Processing & Preserving of Fish & Fish Products	<b>49</b>	-11.8	-7.4	-5.9	-5.9	-7.9	-6.3	-9.6
Coffee Processing	<b>54</b>	15.1	46.5	65.0	45.7	42.7	44.6	36.8
Manufacture of Grain Milling products	<b>2</b>	****	****	****	****	****	****	****
Tea Processing	<b>45</b>	7.9	9.2	15.9	19.2	18.3	16.4	12.6
<b>DRINKS AND TOBACCO</b>	<b>68</b>	<b>-14.4</b>	<b>-4.9</b>	<b>3.3</b>	<b>5.0</b>	<b>3.2</b>	<b>4.8</b>	<b>4.1</b>
Manufacture of Malt Liquors and Malt	<b>17</b>	****	****	****	****	****	****	****
Manufacture of Tobacco Products	<b>51</b>	-14.4	-4.9	3.3	5.0	3.2	4.8	4.1
<b>TEXTILES, CLOTHING AND FOOTWEAR</b>	<b>13</b>	<b>-17.6</b>	<b>-15.6</b>	<b>-8.4</b>	<b>-5.6</b>	<b>-0.7</b>	<b>20.9</b>	<b>23.9</b>
Cotton Ginning	<b>10</b>	****	****	****	****	****	****	****
Manufacture of Leather & Foot Wear	<b>3</b>	-17.6	-15.6	-8.4	-5.6	-0.7	20.9	23.9
<b>PAPER PRODUCTS</b>	<b>1</b>	<b>-7.8</b>	<b>-5.5</b>	<b>3.8</b>	<b>7.0</b>	<b>4.6</b>	<b>4.4</b>	<b>6.9</b>
Sawmilling, Paper & Paper Products	<b>1</b>	-7.8	-5.5	3.8	7.0	4.6	4.4	6.9
<b>CHEMICALS, PAINT, SOAP &amp; FOAM PRODUCTS</b>	<b>6</b>	<b>-14.0</b>	<b>-11.9</b>	<b>-3.1</b>	<b>-0.5</b>	<b>4.6</b>	<b>4.4</b>	<b>6.9</b>
Manufacture of Soap & Chemical Products	<b>6</b>	-6.2	-11.9	-3.1	-0.5	4.6	4.4	6.9
<b>BRICKS &amp; CEMENT</b>	<b>9</b>	<b>-7.8</b>	<b>-5.5</b>	<b>3.8</b>	<b>7.0</b>	<b>4.6</b>	<b>4.4</b>	<b>6.9</b>
Manufacture of Cement, Lime and Other Articles of Cement	<b>9</b>	-7.8	-5.5	3.8	7.0	4.6	4.4	6.9
<b>METAL &amp; RELATED PRODUCTS</b>	<b>11</b>	<b>-6.2</b>	<b>-6.1</b>	<b>-2.1</b>	<b>0.0</b>	<b>0.0</b>	<b>1.2</b>	<b>5.0</b>
Manufacture of Structural Metal Products	<b>11</b>	-6.2	-6.1	-2.1	0.0	0.0	1.2	5.0
<b>MISCELLANEOUS PRODUCTS</b>	<b>2</b>	<b>-3.8</b>	<b>-3.8</b>	<b>-3.8</b>	<b>-9.9</b>	<b>-9.9</b>	<b>-9.9</b>	<b>-9.8</b>
Manufacture of Plastic products	<b>2</b>	-3.8	-3.8	-3.8	-9.9	-9.9	-9.9	-9.8

**Table 3c: Monthly Changes in Producer Prices-Manufacturing- (Export Market) up to January 2017**

(Base period: July to Sept 2004=100)

Industry Group	Weight	Sep-16	Oct-16	Nov-16	Dec-16	Jan-17	Feb-17	Mar-17
<b>All Manufactured Products</b>	<b>260</b>	<b>4.9</b>	<b>-1.6</b>	<b>4.8</b>	<b>-3.9</b>	<b>0.7</b>	<b>-0.2</b>	<b>-0.4</b>
FOOD PRODUCTS	150	3.9	-2.0	5.1	-4.6	0.8	-0.1	-0.6
DRINKS AND TOBACCO	17	4.7	0.6	2.4	0.7	0.1	-0.1	0.1
TEXTILES, CLOTHING AND FOOTWEAR	13	-0.6	1.6	3.6	1.1	0.3	-0.7	0.4
PAPER PRODUCTS	1	0.2	1.6	3.6	1.1	0.3	-0.7	0.4
CHEMICALS, PAINT, SOAP & FOAM PRODUCTS	6	-8.3	1.6	3.6	1.1	0.3	-0.7	0.4
BRICKS & CEMENT	9	0.2	1.6	3.6	1.1	0.3	-0.7	0.4
METAL & RELATED PRODUCTS	11	-0.4	1.6	1.5	0.7	0.4	0.8	2.7
MISCELLANEOUS PRODUCTS	2	-5.2	0.0	0.0	0.0	0.0	0.0	0.0
<b>FOOD PRODUCTS</b>	<b>150</b>	<b>3.9</b>	<b>-2.0</b>	<b>5.1</b>	<b>-4.6</b>	<b>0.8</b>	<b>-0.1</b>	<b>-0.6</b>
Processing & Preserving of Fish & Fish Products	49	-7.4	0.9	1.6	0.0	0.0	0.0	0.0
Coffee Processing	54	6.3	-3.2	5.7	-5.2	0.9	-0.1	-0.5
Manufacture of Grain Milling products	2	****	****	****	****	****	****	****
Tea Processing	45	1.5	4.9	2.1	2.2	0.0	-1.7	-2.3
<b>DRINKS AND TOBACCO</b>	<b>17</b>	<b>4.7</b>	<b>0.6</b>	<b>2.4</b>	<b>0.7</b>	<b>0.1</b>	<b>-0.1</b>	<b>0.1</b>
Manufacture of Malt Liquors and Malt	17	****	****	****	****	****	****	****
Manufacture of Tobacco Products	51	4.7	0.6	2.4	0.7	0.1	-0.1	0.1
<b>TEXTILES, CLOTHING AND FOOTWEAR</b>	<b>13</b>	<b>-0.6</b>	<b>1.6</b>	<b>3.6</b>	<b>1.1</b>	<b>0.3</b>	<b>-0.7</b>	<b>0.4</b>
Cotton Ginning	10	****	****	****	****	****	****	****
Manufacture of Leather & Foot Wear	3	-0.6	1.6	3.6	1.1	0.3	-0.7	0.4
<b>PAPER PRODUCTS</b>	<b>1</b>	<b>0.2</b>	<b>1.6</b>	<b>3.6</b>	<b>1.1</b>	<b>0.3</b>	<b>-0.7</b>	<b>0.4</b>
Sawmilling, Paper & Paper Products	1	0.2	1.6	3.6	1.1	0.3	-0.7	0.4
<b>CHEMICALS, PAINT, SOAP &amp; FOAM PRODUCTS</b>	<b>6</b>	<b>-8.3</b>	<b>1.6</b>	<b>3.6</b>	<b>1.1</b>	<b>0.3</b>	<b>-0.7</b>	<b>0.4</b>
Manufacture of Soap & Chemical Products	6	-8.3	1.6	3.6	1.1	0.3	-0.7	0.4
<b>BRICKS &amp; CEMENT</b>	<b>9</b>	<b>0.2</b>	<b>1.6</b>	<b>3.6</b>	<b>1.1</b>	<b>0.3</b>	<b>-0.7</b>	<b>0.4</b>
Manufacture of Cement, Lime and Other Articles of Cement	9	0.2	1.6	3.6	1.1	0.3	-0.7	0.4
<b>METAL &amp; RELATED PRODUCTS</b>	<b>11</b>	<b>-0.4</b>	<b>1.6</b>	<b>1.5</b>	<b>0.7</b>	<b>0.4</b>	<b>0.8</b>	<b>2.7</b>
Manufacture of Structural Metal Products	11	-0.4	1.6	1.5	0.7	0.4	0.8	2.7
<b>MISCELLANEOUS PRODUCTS</b>	<b>2</b>	<b>-5.2</b>	<b>0.0</b>	<b>0.0</b>	<b>0.0</b>	<b>0.0</b>	<b>0.0</b>	<b>0.0</b>
Manufacture of Plastic products	2	-5.2	0.0	0.0	0.0	0.0	0.0	0.0